

## PROJECT TITLE: GIOIELLERIA APP

### ABSTRACT

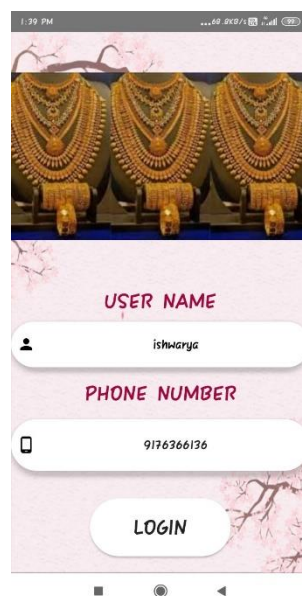
With the rapid development of Internet, e-commerce had been widely using by more and more people, so had shopping online. An Accessories shop for women in online system was designed and implemented based on the analysis of the actual needs of users. Online Accessories shop for women is basically used to build an application program which help people to find and buy latest design of accessories with different categories like gold plated, silver, stones works and so on. It is useful in the way that it makes easier way to buy products online. At the end, this project will satisfy the needs and the requirements of the customers in now a day and try to fulfil it. It is a hope that the major problems faced by the current world can be solved through this project.

### SCREENSHOT LAYOUT

#### MAIN ACTIVITY



#### NEW ACTIVITY



#### MAIN2ACTIVITY



## MAIN3ACTIVITY



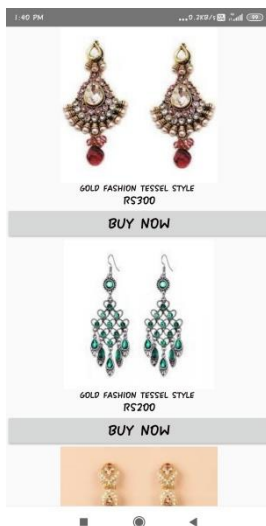
## MAIN4ACTIVITY



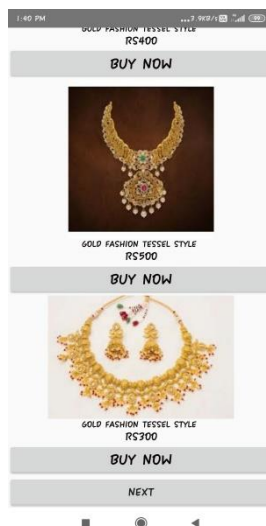
## MAIN5ACTIVITY



## MAIN6ACTIVITY



## MAIN7ACTIVITY



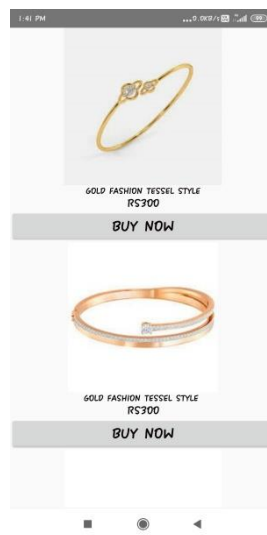
## MAIN8ACTIVITY



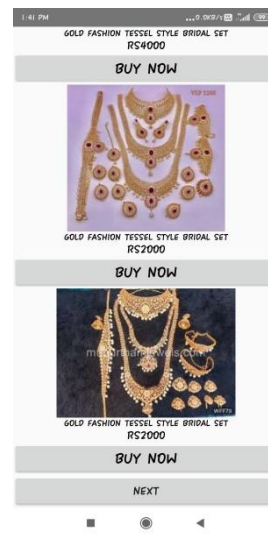
## MAIN9ACTIVITY



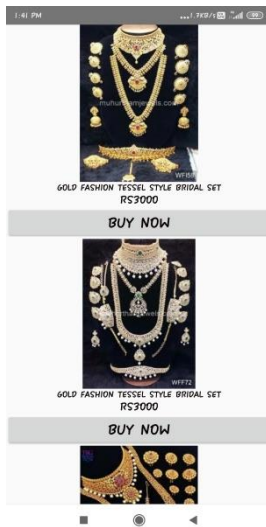
## MAIN10ACTIVITY



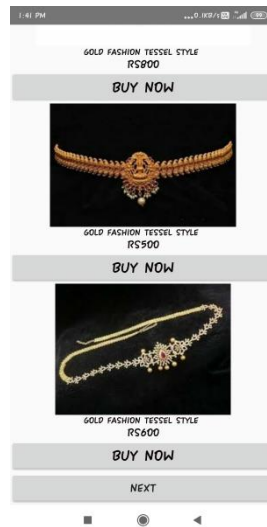
## MAIN11ACTIVITY



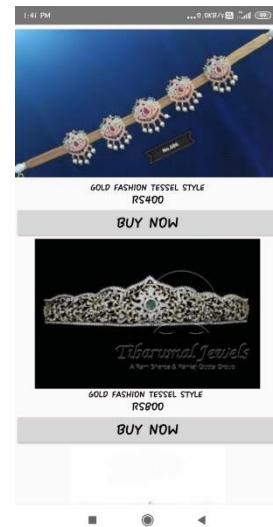
## MAIN12ACTIVITY



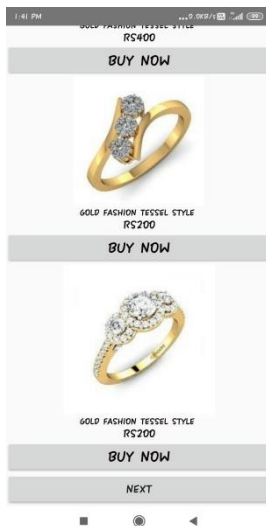
## MAIN15ACTIVITY



## MAIN16ACTIVITY



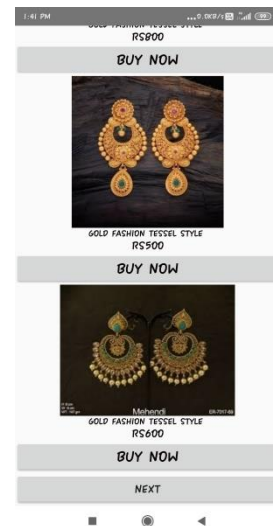
## MAIN21ACTIVITY



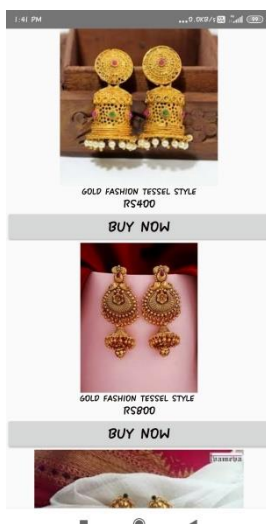
## MAIN13ACTIVITY



## MAIN17ACTIVITY



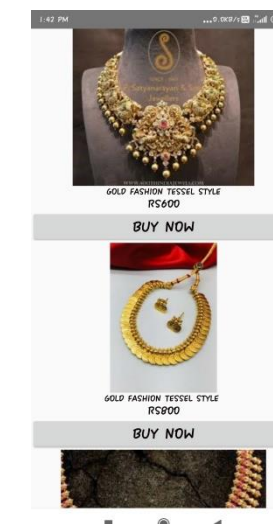
## MAIN18ACTIVITY



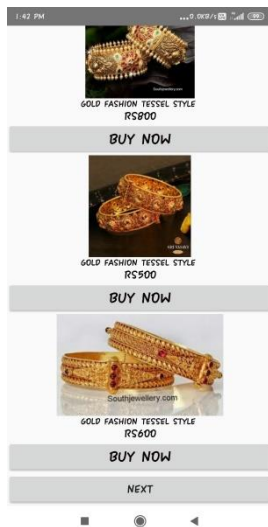
## MAIN19ACTIVITY



## MAIN20ACTIVITY



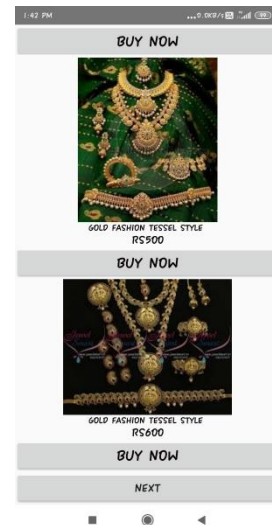
## MAIN14ACTIVITY



## MAIN23ACTIVITY



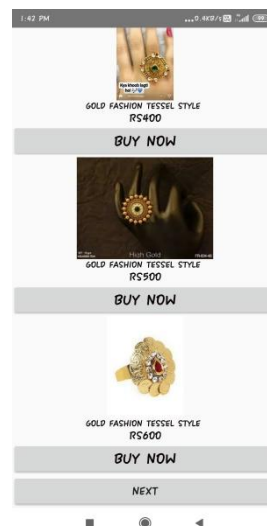
## MAIN22ACTIVITY



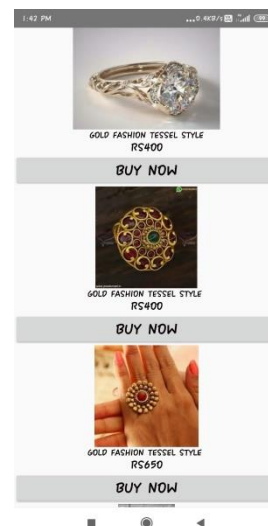
## MAIN24ACTIVITY



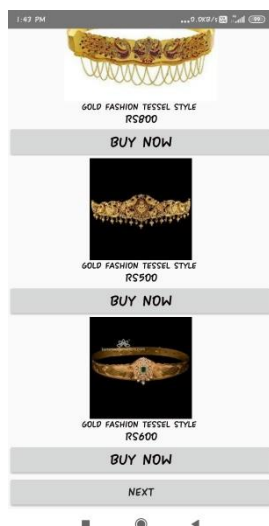
## MAIN25ACTIVITY



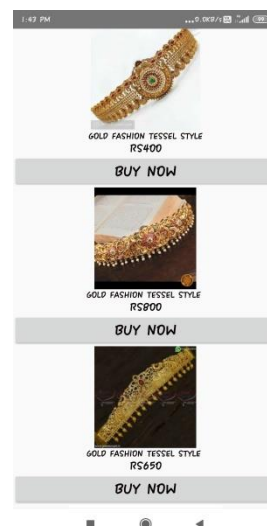
## MAIN26ACTIVITY



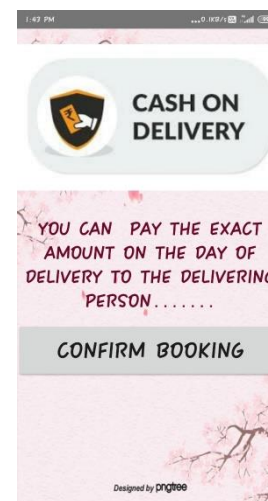
## MAIN27ACTIVITY



## MAIN28ACTIVITY



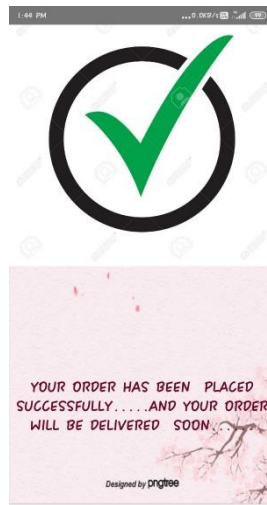
## MAIN29ACTIVITY



## MAIN30ACTIVITY

A screenshot of a mobile application interface with a pink floral background. The form contains the following fields: NAME (with the value 'ishwarya'), DELIVERY ADDRESS (with the value '15/5 Kamaraj street, Mylapore, Chennai'), PIN CODE (with the value '600004'), PHONE NUMBER (with the value '9176366139'), and LANDMARK (with the value 'City centre'). At the bottom of the form is a large white button labeled 'CONFIRM'.

## MAIN31ACTIVITY



## MAIN31ACTIVITY

